

# **BTEC level 3 Extended Diploma in Art & Design (Photography) Edexcel**

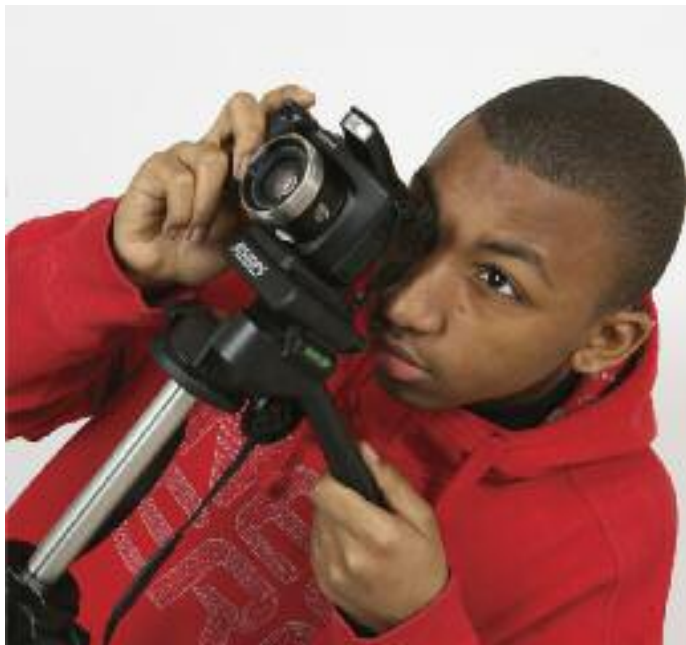
## **What does the course involve?**

A fantastic course that is focused on approaches to contemporary photography practices. The history of photography and developments in technology are taught, alongside experimenting with processes from pinhole photography to digital work.

The course will offer hands-on experience and open doors to a world of possibilities in the lens based visual arts field as each unit is based around briefs which echo ones you will experience as a practising photographer. You will work with real clients and freelance specialist to help you develop industry standard practices and skills. The course will enable you to develop your creative abilities whilst building your own portfolio of work.

As part of your main programme of study you will work towards a qualification in Maths or ICT where appropriate.

**[www.johnruskin.ac.uk](http://www.johnruskin.ac.uk)**



## What units will I be studying?

### Core units:

- Visual recording in Art & Design
- Communication through Art & Design
- Materials, techniques and processes in Art & Design
- Ideas and concepts in Art & Design
- Contextual influences in Art & Design

### Specialist units:

- Lens based image making
- Experimental image making
- Narrative Image Making
- Photographic studio techniques
- Mixed Media Image making

## What are the career opportunities open to me if I take this course?

A BTEC Level 3 Extended Diploma in Photography will provide a direct progression route to a University course, studying Photography, Graphic Design or Fine Art. Also, with the rise of magazines on the market, and the rise of freelance photographers there are many photographer's assistant opportunities. Having a BTEC and a creative portfolio will put you ahead of many amateur photographers. Careers in photography span a number of categories from advertising and editorial, press and photojournalism, to fashion or sport. Aspects of most categories are taught on the course.



**John Ruskin  
College**

*your career starts here...*

Selsdon Park Road  
South Croydon  
CR2 8JJ

[www.johnruskin.ac.uk](http://www.johnruskin.ac.uk)

### **Entry Requirements for Level 3 Qualifications (A Level Equivalents):**

Learners must have at least 4 GCSEs at grade C or above to include English (or equivalent) or a merit or above at a full level 2 course. For Science, grade C at GCSE Maths (or equivalent) is required.

Learners at all levels will be expected to undertake an initial assessment to ascertain they are on the correct level of course.

For further information telephone:

**020 8651 1131**

Details can be subject to change.